

# PAGEANT

Patrons:  
H.R.H. THE PRINCE OF WALES  
T.R.H. THE DUKE & DUCHESS OF YORK



HON. ORGANISER:  
LADY DE CHAIR  
PAGEANT MASTER:  
GWEN LALLY

**JUNE 9<sup>TO</sup> 16**  
**OF RUNNYMEDE**

Twice Daily at 2.30 and 7.30

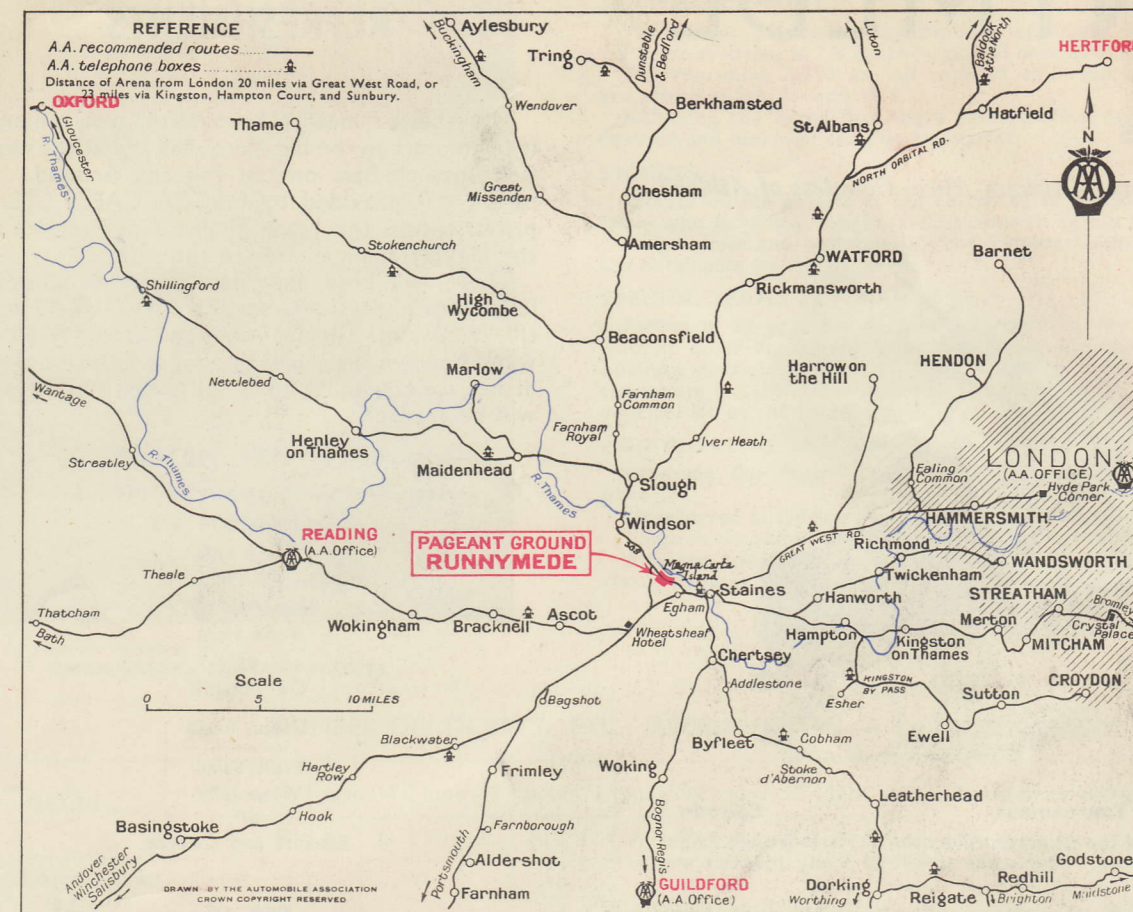
7,500 Seats at 1/6; 2/6; 5/-; 10/6 and 21/-

All seats except those at 1/6 Covered and Reserved

Tickets from all agencies or direct from

**TICKET MANAGER—PAGEANT HOUSE, EGHAM, SURREY.**  
(EGHAM 700)

## HOW TO GET TO THE PAGEANT



Travel facilities for 1934 make the Pageant of Runnymede easy of access to all, whether coming by road or rail, whether by coach, bus or private limousine.

Special arrangements have been undertaken by the police to insure smooth and clear traffic control.

The Southern and Great Western Railway Companies announce an augmented service to meet the requirements and the London Passenger Transport Board have undertaken to provide ample transportation to deal with railway traffic at Egham, Staines and Windsor Stations to the Arena and also to augment the usual bus services when necessary.

To add to the convenience of all please book early and arrive on the Arena in plenty of time.

### BUS AND COACH SERVICES AUGMENTED FOR THE PAGEANT

**Coaches.** Special services of Luxury Coaches at attractive fares from all parts, delivering passengers in maximum comfort at the Pageant Arena.

**Regular Services.** (Green Line Coach Services indicated by letters, Buses by numbers).

**467** connects the Arena with Windsor, Egham and Staines.

**Egham** is served by **A, A-A and N**, providing direct connections with (A) Ascot, (A-A) Sunningdale, Staines, Ashford (Mddx.), Feltham, Hounslow, Chiswick, Hammersmith, Kensington, Victoria, Elephant and Castle, New Cross, Blackheath, Welling, Dartford and Gravesend. (N) from Windsor via Staines, Bedford, Hounslow, Chiswick, Shepherds Bush, Bayswater Road, Baker Street, Camden Town, Finsbury Park, Walthamstow, Woodford, Loughton, Epping.

**Windsor** is served by **O** from London via Great West Road, Slough, Eton. **Slough** is served by **P** from London via the same route to and from Farnham Common. **81** serves Windsor from Hounslow via Harlington, Cranbrook (Mddx.), Slough and Eton. **117** connects Egham with Hounslow via Feltham, Ashford (Mddx.) and Staines, and **116** with Hounslow, via Bedford, Stanwell, Staines, Egham and Virginia Water. **36** and **37** run close to the Arena from Windsor, Staines, Chertsey, Addlestone, Byfleet, Woking, Ripley and Guildford, and **507** from Uxbridge, via Iwer Heath, Slough, Eton, Windsor and Staines. **503** connects Uxbridge with Windsor, via

Cowley, Iwer, Slough and Eton. **417** connects Egham with Staines, Windsor, Eton, Slough and Langley Village. **198** connects Kingston with Staines. **1628** connects Slough with Leatherhead. The Aldershot and District Traction Co. **No. 1** connects Aldershot with Egham Station, and their Coach Service connects Farnham with Staines, via Aldershot, Farnborough, Frimley, Camberley, Sunningdale, Egham.

### IF YOU TRAVEL BY RAIL

Egham (S.R.) and Staines (S.R. and G.W.R.) half an hour from Waterloo and Paddington. Regular Services specially augmented as requisite at Cheap Day Fares. Every Pageant Ticket carries a railway voucher for cheap travel. Arena within easy distance of Egham and Staines Stations to which convenient services operate from all parts. Reduced fare tickets will be issued to Egham, Staines, or Windsor from all stations within a rail distance of 80 miles. S.R. and G.W.R., by prior arrangement will quote special reduced fares for parties of 30 or more.

Bus Service between Railway Stations and Pageant Arena augmented for the occasion, by special arrangement with the London Passenger Transport Board, to connect with special train service.

### RIVER STEAMERS

Launches with large saloons and every comfort, protected on deck against rain or excessive sun, commanding extensive views over the romantic country on each bank of the Thames. Cheap return tickets. Teas and light refreshments on board.

### PARKING

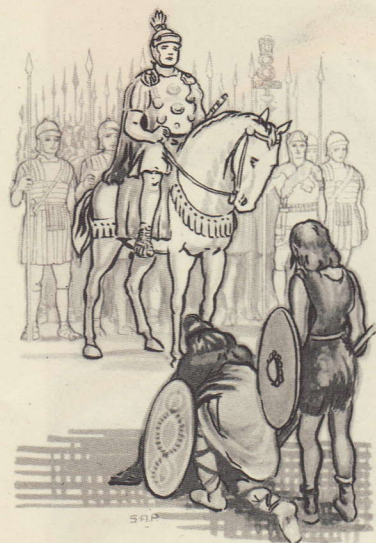
Car Parks staffed by the R.A.C.—Reserved (booked in advance) 5/- per car or coach. Unreserved (obtainable on ground) 2/6 per car or coach. Unreserved (obtainable on ground) 1/- per motor cycle or combination. 6d. per pedal cycle.



# THE PAGEANT OF RUNNYMEDE

## In Aid of Local Hospitals and Charities

*Under the Distinguished Patronage of H.R.H. the Prince of Wales, T.R.H. the Duke and Duchess of York and the Earl and Princess Alice, Countess of Athlone*



### The Romans

### Episode 1

**Prologue** written by John Drinkwater and spoken by Dame Sybil Thorndike and Lady Forbes Robertson (at alternate performances).

**Episode 1** Romano-British, A.D. 44—Illustrates the dawn of British history, when a Roman Legion, commanded by Vespasian, is advancing up the Thames Valley. The domestic scene of a British chieftain with his family and armed forces is interrupted by the approach of the Romans. Vespasian, in the van of his Legion, is ambushed and nearly captured, but saved by the arrival of his main force with elephants.

**Episode 2** Saxon A.D. 884—Britain, having been conquered by the Anglo-Saxons, is making great progress

## SYNOPSIS of EPISODES

but is now harassed by a fresh invader. A party of Danes reaches Chertsey Abbey and demands its surrender. The Abbot refuses; the monastery is burnt and the monks martyred.

**Episode 3** Norman, 1215—England, welded into a single State by the Norman Conquest, has reached the moment when her feudal sovereign must be controlled. The barons with their armed followers meet King John on Runnymede, and compel his acceptance of the Great Charter. The pomp and heraldry of this scene are splendid and unforgettable.

**Episode 4** Plantagenet, 1358—In the age of chivalry when jousting was the sport of kings and lords, Edward III is shown holding a magnificent tournament at Windsor. His prisoners include the Kings of France and of Scotland, who join in the contests. The Black Prince, the national hero, is present, together with Queen Philippa, his mother.

**Episode 5** Tudor, 1522—The Renaissance has reached England, and the splendour-loving Henry VIII, still young and energetic, entertains at Windsor the Emperor Charles V. Katherine of Aragon and Cardinal Wolsey are prominent figures. A symbolical play is performed, madrigals are sung, followed by a masque and dancing, and concluding the entertainment comes an exhibition of archery, in which Henry takes part.

**Episode 6** Stuart, 1683—The Commonwealth is being forgotten. Charles II has revived the colour and picturesqueness of earlier days. He is shown at a meet of his buckhounds at Sunninghill. In the gallant crowd attending the King are many notable men of the hour and the Court ladies include Louise de Querouaille and Nell Gwynne.

A highwayman interlude provides a thrilling moment.

**Episode 7** Queen Anne, 1711—This year Anne attended the first race meeting at Ascot. The leap into popularity of the national sports of hunting and horseracing when England finally settled down to ways of peace is illustrated in this and the previous episode.



### Windsor Tournament

### Episode 4

In place of the disgraced Duchess of Marlborough reigns Mrs. Masham. The scene is full of lively interest and charm.

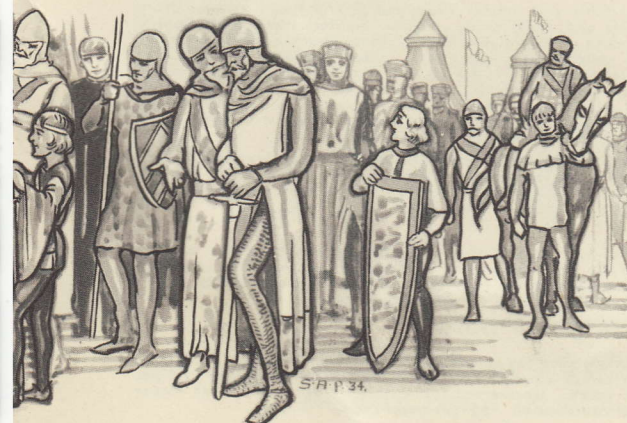
**Episode 8** Georgian, 1816—Rural England after Waterloo. A country fair is in full swing. While the merry-making is at its height troops are seen returning from the Napoleonic War. When it is realised that the "Iron Duke" is among them on a brief visit to England, enthusiasm reaches fever heat.

The Duke of Wellington and his Staff are greeted by many notabilities, amid the plaudits of the crowd.

**Epilogue** written by John Drinkwater, spoken by Miss Irene Vanbrugh and Miss Violet Vanbrugh (at alternate performances).



Sealing of Magna Carta on Runnymede



Episode 3

## LUNCHEONS, SUPPERS AND REFRESHMENTS

Whether a "meal or a mouthful" you can enjoy it in comfort in the big Marquees and at the ample Refreshment Bars on the Pageant Ground. All catering is provided by MECCA CAFES LTD. at prices within the reach of all. Good service and the highest quality food are the rule.

There will be a daily service of refreshments, luncheons, teas, suppers and snacks from 12 noon till 11.30 p.m. Beers, wines and spirits of all the well-known brands and several specialities of soft drinks, ice creams, and tea and coffee freshly made will be available.

### SPECIMEN MENUS

Here are some specimen menus:—

#### LUNCHEON 2/6

Roast Beef  
Veal and Ham Pie  
Roast Lamb  
York Ham  
or  
Ox Tongue  
Green Salad  
Fruit Salad  
Wine Jelly  
or  
Biscuits and Cheese

#### TEA 1/6

Tea—Indian or China  
Sandwiches—various  
White or Brown Bread  
and Butter  
Dundee and Almond Cake  
Reception Pastries

#### DINNER 4/-

Grape Fruit  
Mayonnaise of Salmon  
Roast Chicken  
Roast Beef  
York Ham  
Ox Tongue  
Fruit and Cream  
Coffee

### BOOKING TABLES FOR PARTIES

Ring up Hop. 5135 (Extension 211) book your table and order your meal. This will save disappointment before or after the performance which your party will attend.





PHOTOGRAPH BY SASHA  
GWEN LALLY - PAGEANT MASTER

## PRICES OF ADMISSION

### SEATING CAPACITY

The Stands have a seating capacity of 7,500, of which 2,250 are available at 1/6 (uncovered and unreserved). The remaining 5,250 are all covered and reserved, and are priced at 2/6, 5/- and 10/6.

Adjoining the Royal Box there are a limited number of covered and reserved seats at 21/- each.

### TICKETS

Tickets will be on sale at the entrances to the Arena for those who have not bought their tickets in advance.

Programmes and cushions (by the London Cushion Co.) are obtainable inside the Arena.

### SPECIAL TERMS FOR PARTIES

Parties of 30 or more persons belonging to any school, club, or other recognised body attending the Pageant, can obtain a discount of 10% on their booking providing the tickets are bought at one time before May 1st, and the party vouched for by the Secretary.

### CAR PARKING

Reserved Car Park Tickets can be bought in advance, price 5/-.

Unreserved at 2/6 are obtainable only on the ground.

These Parks adjoin the entrances to the Pageant Arena.

Advance booking from all the usual theatre ticket and travel booking agencies, or direct from—

PAGEANT TICKET OFFICE,  
RUNNYMEDE LODGE,  
EGHAM, SURREY.  
(Egham 700)

NUMBER OF TICKETS, ETC., REQUIRED ON :—

DETAIL.	June 9		June 11		June 12		June 13		June 14		June 15		June 16		Remittance enclosed.		
	A.	E.	A.	E.	A.	E.	A.	E.	A.	E.	A.	E.	A.	E.	£	s.	d.
Admission Tickets. 21/-																	
10/6																	
5 -																	
2/6																	
Reserved Car Park. 5/-																	
Total Remittance enclosed															£		

Cheques to be made payable to "The Pageant of Runnymede Ltd." and crossed National Provincial Bank of England.

Name .....

Address .....

Post this Order Form to Your Nearest Agent—See Back

# BOOK YOUR SEATS NOW

## SPECIAL CONCESSION

Last date for 10% discount for approved parties now extended to May 15th.

## LIST OF AGENTS AND SUB-AGENTS LONDON

WEST 1.		WEST 2-13.	
Ashton & Mitchell's Royal Theatre Agency, 12-14, Mayfair Place, Berkeley St., W.1	Mayfair 7222	Stewart & Co., 8, Coburg Place, W.2	Bayswater 0735
Austin Reeds, Regent St., W.1	Regent 6789	W. H. Smith & Sons, 204, High Rd., Chiswick, W.4	Chiswick 0188
Adams, 139, New Bond St., W.1	Mayfair 4775	E. E. Squire, 30, Broadway, Ealing, W.5	Ealing 1880
Buzzards, 197 and 500, Oxford St., W.1	Gerrard 2831	Palmer's Stores, Broadway, Hammersmith, W.6	Riverside 3000
Bristol Grill, Cork St., W.1	Regent 4204	Palmer & Son, 96, North End Rd., W. Kensington, W.6	Fulham 5085
Thos. Cook & Sons, Berkeley St., W.1	Grosvenor 4000	J. Barker & Co., Ltd., Kensington, W.8	Western 5432
Chappell & Co., 50, New Bond St., W.1	Mayfair 7500	N. Goodban, 112, Holland Park Avenue, W.11	Park 2121
Cox & Kings, 13, Regent St., W.1	Whitehall 3333	E. E. Squire, 251, Northfields, W. Ealing, W.13	Ealing 1880
D. H. Evans & Co., Ltd., 290, Oxford St., W.1	Mayfair 8800	WEST CENTRAL.	
Keith Prowse & Co., 42-3, Poland St., W.1	Gerrard 9000	Australian Travel Service, Australia House, Strand	Temple 6262
Lacon & Ollier, 2, Old Bond St., W.1	Regent 5321	British Continental Travel, 48, Southampton Row, W.C.1	Holborn 9442
G. H. Lashmar, 77, Davies St., W.1	Mayfair 1418-9	British Resorts Bureau, 76, New Oxford St., W.C.1	Temple Bar 3400
Leader & Co., Ltd., 14, Royal Arcade, Old Bond St., W.1	Regent 0846-7	Civil Service Supply Association, Bedford St., W.C.	Temple Bar 1023
Marshall & Snelgrove, Oxford St., W.1	Mayfair 6600	District Messenger & Theatre Co., 100, St. Martin's Lane	
Monseigneur Restaurant, Piccadilly, W.1	Regent 6957	EAST CENTRAL.	
Murdoch, Murdoch & Co., 463, Oxford St., W.1 (and Branches)	Mayfair 6722	Alfred Hays, Ltd., 74, Cornhill, E.C.	Avenue 3300
Paxton & Co., 96, New Oxford St., W.1	Gerrard 4801	Johnson & Co., 133, Fenchurch St., E.C.	Monument 0931-3
Princes Restaurant, Piccadilly, W.1	Regent 4655	S. & J. Levy, Hatton Gardens, E.C.	Holborn 0702
Stewart & Co., Old Bond St., W.1	Regent 1088	Old Colony Club, 84, Leadenhall St., E.C.	Avenue 6680
513, Oxford St., W.1	Mayfair 3162	Civil Service Supply Association, 136, Queen Victoria St., E.C.4	City 6700
74, Regent St., W.1	Regent 5711	SOUTH-EAST.	
Webster & Waddington, Mortimer St., W.1	Langham 3030	Chiesmans, High St., Lewisham, S.E.13	Lee Green 4321
Webster & Girling, Ltd., Cumberland Hotel, Marble Arch	Ambassador 3260	Timpsons & Sons, Lewisham High Rd., S.E.14	New Cross 0011
Berners Hotel, Berners St.	Museum 1629	Norwood Travel Bureau, 21, Western St., S.W.19	Livingstone 3838
Fords Hotel, Manchester St., W.1	Welbeck 4164	NORTH.	
Shaftesbury Hotel, St. Andrews St.	Temple Bar 6082	Dean & Dawson, 7, Blandford Square, N.W.1	Paddington 8050-5
Trocadero Restaurant, Shaftesbury Avenue	Gerrard 6920	Webster & Girling, Ltd., 211, Baker St., N.W.1	Welbeck 6666
Popular Cafe, Piccadilly, W.1	Gerrard 6920	John Barnes & Co., Ltd., 291-297, Finchley Rd., N.W.3	Maida Vale 6000
Florence Restaurant, Rupert St.	Gerrard 5444	Cosmos Travel Bureau, 58, Rosslyn Hill, N.W.3	
SOUTH-WEST.		Stewart & Co., 225, Finchley Rd., N.W.3	Hampstead 5995
Army & Navy Co-operative Society, 105, Victoria St.	Victoria 8600	Brook Flowers & Co., Ltd., Station Buildings, Cross Rds., Golders Green, N.W.11	Speedwell 5301-2
American Express Co., Haymarket, S.W.	Whitehall 4411	NORTH-WEST.	
Alexandra Hotel, Hyde Park Corner, S.W.1	Sloane 4521	Dean & Dawson, 7, Blandford Square, N.W.1	Paddington 8050-5
Mrs. Burcham, 4, Garrett Lane, Wandsworth, S.W.1	Battersea 3475	Webster & Girling, Ltd., 211, Baker St., N.W.1	Welbeck 6666
Travel Federation Co., 20, Cockspur St., S.W.1	Whitehall 6888	John Barnes & Co., Ltd., 291-297, Finchley Rd., N.W.3	Maida Vale 6000
Harrods, Ltd., Brompton Rd., S.W.1	Sloane 1234	Cosmos Travel Bureau, 58, Rosslyn Hill, N.W.3	
Ladies Army & Navy Club, St. James Place, S.W.	Regent 7228	Stewart & Co., 225, Finchley Rd., N.W.3	Hampstead 5995
"Martyns," 2a Disraeli Rd., Putney, S.W.	Putney 0473	Brook Flowers & Co., Ltd., Station Buildings, Cross Rds., Golders Green, N.W.11	Speedwell 5301-2
Stewart & Co., Victoria House, Victoria St.	Victoria 9695	SOUTH.	
Thames House Restaurant, Millbank, S.W.1	Victoria 2827	Bensons, 70, Upper St., Islington, N.	Clerkenwell 0016
United Service Club, Whitehall, S.W.1	Whitehall 8081	C. R. Buttle, 296, St. Pauls Rd., Highbury, N.	North 3599
Overseas Trading & Shipping Co., 106, Fulham Rd., S.W.3	Kensington 4254	W. J. Elliott, Ltd., 17, The Exchange, Muswell Hill, N.	Tudor 3955
Pickfords Ltd., 156, Brompton Rd., S.W.3	Kensington 0990	SOUTH-EAST.	
Cecil Roy, Ltd., 15, Sussex Place, S.W.7	Kensington 0121	Chiesmans, High St., Lewisham, S.E.13	Lee Green 4321
Normans, Lavender Hill, S.W.11	Battersea 4453	Timpsons & Sons, Lewisham High Rd., S.E.14	New Cross 0011
SOUTH-EAST.		Norwood Travel Bureau, 21, Western St., S.W.19	Livingstone 3838
EAST-CENTRAL.		NORTH.	
Alfred Hays, Ltd., 74, Cornhill, E.C.		Dean & Dawson, 7, Blandford Square, N.W.1	Paddington 8050-5
Johnson & Co., 133, Fenchurch St., E.C.		Webster & Girling, Ltd., 211, Baker St., N.W.1	Welbeck 6666
S. & J. Levy, Hatton Gardens, E.C.		John Barnes & Co., Ltd., 291-297, Finchley Rd., N.W.3	Maida Vale 6000
Old Colony Club, 84, Leadenhall St., E.C.		Cosmos Travel Bureau, 58, Rosslyn Hill, N.W.3	
Civil Service Supply Association, 136, Queen Victoria St., E.C.4		Stewart & Co., 225, Finchley Rd., N.W.3	Hampstead 5995
City 6700		Brook Flowers & Co., Ltd., Station Buildings, Cross Rds., Golders Green, N.W.11	Speedwell 5301-2

## PROVINCIAL

Ascot	Ascot Printing Works, Queens Place, High St.	Hove	Pickfords, Ltd., 90, Western Rd.
Aylesbury	W. H. Smith & Sons, Ltd., 28, High St.	KingstononThames	Pickfords, Ltd., 25, Fyfe Rd.
Barking	The Longbridge Press, 70, Longbridge Rd.	Leeds	Archibald Ramsden, Ltd., 12, Park Rd.
Basingstoke (Hants)	C. Scard, Winton Square.	Maidenhead	Pickfords, Ltd., 27, Queen St.
Beaconsfield	H. J. Nutt, Station Gates.	Maidstone	Pickfords, Ltd., Bank St.
Birmingham	Dale, Forty & Co., 80-84, New St.	Manchester	Ashton & Mitchell, Midland Hotel.
Brighton	Pickfords, Ltd., 95, Queens Rd.	Marlow	W. H. Smith & Son, Ltd., 60, High St.
Bristol	Chas. Lockier, 29a, Queens Rd.	Oxford	Acotts, 124, High St.
Bournemouth	J. E. Beale, The Quadrant.	Pangbourne (Berks)	W. H. Smith & Son, Ltd.
Bradford	J. Wood & Sons, Ltd., 9, New Ivegate.	Plymouth	Moon & Sons, Ltd., 67, George St.
Bromley	Morley & Son, Aberdeen Buildings, High St.	Reading	Barnes & Avis, 3-7, Duke St.
	Mundays, 23, East St.	Redhill	Roberts & Sons, 73, Station Rd.
Camberley (Surrey)	Potter & Co.		Wood & Sons, 30, Station Rd.
Cambridge	W. W. Bell & Co., Ltd., 6, Kings Parade.	Reigate (Surrey)	C. Allingham.
Canterbury	Pickfords, Ltd., 20, St. Margarets Rd.	Richmond	Arthurs, 2, Dome Buildings.
Caterham	Blythe & Marden, Ltd., 26, Croydon Rd.		Etherington & Son, 4, Lion St.
Chertsey	A. Cooke, 1, Windsor St.		Joseph Mears Motors & Launches, 5, Hill St.
Croydon	Coldmans Tours, 4, Grand Parade, High St.	Rochester	Pickfords, Ltd., 371, High St.
Dorking	Andrews & Co., 15a, South St.	Slough	Blanchett & Sons, 99, High St.
Dover	Pickfords, Ltd., 77, Castle St.	Staines	Andrew Montgomery, 23, Clarence St.
Dublin	Pigott & Co., Ltd., 112, Grafton St.	Sunningdale	W. Pack, London Rd.
Eastbourne	Pickfords, Ltd., 6, Terminus Buildings.	Surbiton	W. Knibb, 10, Brighton Rd.
Egham	F. Larkin, 60, High St.	Sutton	J. Dewey, Grove Rd.
Epsom	Western & Co., High St.		W. H. Smith & Son, Ltd., High St.
Esher	Esher Pharmacy, High St.	Twickenham	Emery & Co., High St.
Ewell	Ewell Court Electrical, 197, Kingston Rd.	Uxbridge	Willis & Sons, 268-270, High St.
Folkestone	Pickfords, Ltd., 13, Guildhall St.	Walton on Thames	A. Jack, 22, High St.
Gerrards Cross	R. Binder, 6, Station Parade.	Wargrave (Berks)	W. H. Smith & Son, Ltd., High St.
Gillingham	Pickfords, Ltd., King St.	Wellington College	
Harrow	Pickfords, Ltd., 383, Station Rd.	(Berks)	W. H. Smith & Son, Ltd., Dukes Ride.
Hastings	Pickfords, Ltd., 21, Havelock Rd.	Weybridge	Messrs. Rhythm, 27, Church St.
Hendon Central	Hounson, 22, Watford Lane.	Wimbledon	Maxwell & Sons, 45, Mill St.
Henley on Thames	W. H. Smith & Son, Ltd., 1, Duke St.	Windsor	W. H. Smith & Son, Ltd., 6, Thames St.
High Wycombe	H. J. Nutt, 24, High St.	Wokingham	Herring Brothers, The Garage.